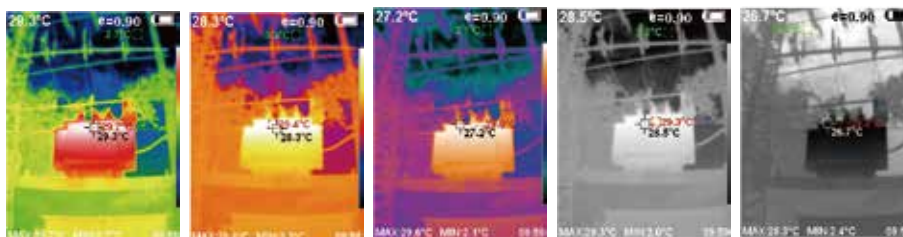


Thermal Imaging Camera : กล้องถ่ายภาพความร้อน

Thermal Imaging Camera is widely used in the Medicine, archaeology, transport, agriculture and so on.

Specification

Model	HT-A1	HT-A2
Display screen	3.2 " full angle TFT display screen	3.2 " full angle TFT display screen
Infrared image resolution	220x160	320x240
visible image resolution	640x480(300,000 pixel)	640x480(300,000 pixel)
Field angle/shortest focus length	35°x26°/0.15mm	56°x42°/0.15mm
Thermal sensitivity	0.07°C	
Temperature measurement range	-20°C to 300°C (-4° F to 572° F)	
Measurement accuracy	±2% / ±2°C	
Emissivity	Adjustable from 0.01 to 1.0	
Frame rate of thermal images	9Hz	
Wavelength coverage	8-14um	
Focus mode	Fixed	
Color palette	Rainbow, iron oxide red, cold color, black & white, white & black	
View option	The integration of thermal image with 25% step length and visible image.	
Storage medium	Built-in 3G above 2 million image stored)	
File format	JPG	
USB	Micro USB 2.0	
Power supply	Built-in chargeable 1800 battery	
Automatic power-off time	Selectable: 5 minutes/20 minutes/ not power off automatically	
Product size (length × width × height)	140mm×80mm×28mm	
Product weight	208g	
Work temperature	0°C to 45°C	
Storage temperature	-20°C to 60°C	
Relative humidity	< 85%RH	



Rainbow

Iron oxide red

Cold color

White heat

Black heat

HT-A1/A2